

2022



**COHORT**



**Medtronic**




# 2022 [ COHORT DEMOGRAPHICS ]


## MEDTRONIC | SHPE INTERNSHIP PROGRAM



### UNIVERSITIES REPRESENTED (34 Interns)

- Auburn University (1)
- California Polytechnic State University, San Luis Obispo (2)
- California State University, Long Beach (1)
- California State University, Los Angeles (1)
- Case Western Reserve (1)
- Duke University (1)
- Florida Atlantic University (1)
- Florida International University (3)
- Georgia Institute of Technology (2)
- Loyola University Chicago (1)
- Massachusetts Institute of Technology (1)
- New Jersey Institute of Technology (1)
- Princeton (1)
- Rice University (2)
- Santa Clara University (1)
- State University of New York, New Paltz (1)
- Stevens Institute of Technology (1)
- Texas A&M (1)
- University of Florida (3)
- University of Houston (1)
- University of Illinois, Chicago (3)
- University of Southern California (1)
- University of Washington (1)
- Virginia Commonwealth University (1)
- Wayne State University (1)

**3.6**   
**Average GPA**

**68%**   
**First Generation  
to College Intern**

**22**   
**Average  
Intern Age**

19 Years

33 Years

### Gender Breakdown

**14**

Female

**19**

Male

**1**

Unspecified



**KARINA ADAN**

University of Illinois,  
Chicago  
Mechanical Engineering



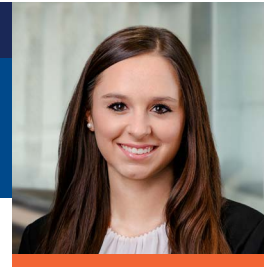
**MARIA ANDERE**

Florida International  
University  
Biomedical Engineering



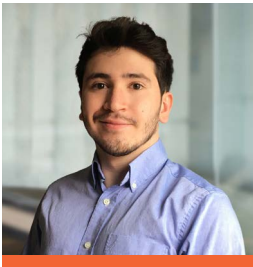
**FERNANDO AVILES GARCIA**

Princeton University  
Computer Science



**JULIANNA BATTAGLIA**

Auburn University  
Electrical Engineering



**SEBASTIAN CHURION**

Stevens Institute  
of Technology  
Computer Science



**ISRAEL COLIN**

Santa Clara University  
Computer Science



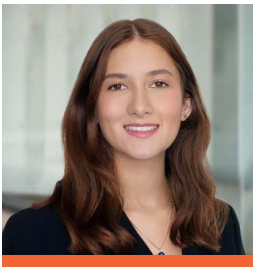
**HECTOR COLLAZO MELENDEZ**

Georgia Institute  
of Technology  
Biomedical Engineering



**NAYELI DE LEON**

University of  
Southern California  
Biomedical Engineering



**MAYA DIAZ BRANNON**

Georgia Institute  
of Technology  
Biomedical Engineering



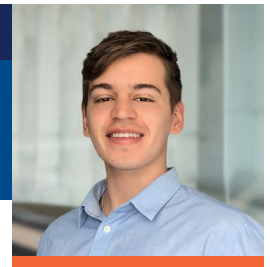
**CATALINA DIEZ**

University of Florida  
Biomedical Engineering



**ADRIAN FERNANDEZ**

University of Florida  
Electrical Engineering



**JUAN GARCIA**

Case Western  
Reserve University  
Biomedical Engineering





**JOCELYN GARCIA**

Florida International University  
Electrical Engineering



**VANESSA GARLEPP**

Rice University  
Bioengineering



**DAVID GONZALEZ**

California State University, Los Angeles  
Electrical Engineering



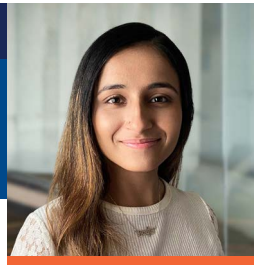
**ANDREW HERNANDEZ**

California State University, Long Beach  
Mechanical Engineering



**VICTOR HERNANDEZ**

University of Illinois at Chicago  
Electrical Engineering



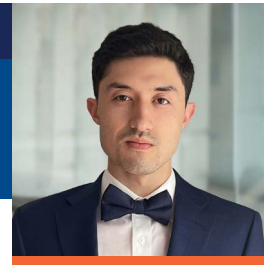
**SUKHPREET KAUR**

Wayne State University  
Biomedical Engineering



**TAYLOR LEONARD**

New Jersey Institute of Technology  
Biomedical Engineering



**SANTIAGO LOPEZ**

Virginia Commonwealth University  
Biomedical Engineering



**BRIANA MENDOZA**

University of Illinois at Chicago  
Mechanical Engineering



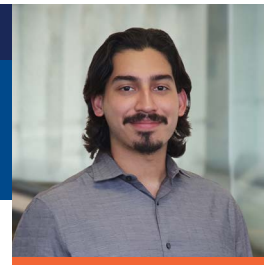
**YORDYN MENENDEZ**

University of Houston  
Electrical Engineering



**NICOLE MORALES**

State University of New York at New Paltz  
Mechanical Engineering



**SAMUEL OVALLE**

Florida International University  
Mechanical Engineering



**PHUC PHAM**

University of Florida  
Biomedical Engineering



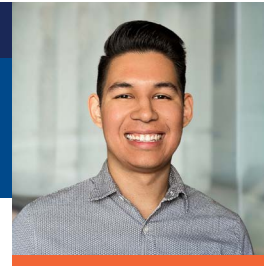
**DAVID RAMIREZ**

Duke University  
Biomedical Engineering  
and Electrical/Computer  
Engineering



**JASON RAMIREZ**

Massachusetts Institute  
of Technology  
Mechanical Engineering



**TIMOTHY REYNA**

California Polytechnic  
State University,  
San Luis Obispo  
Mechanical Engineering



**JULIE ROMANO**

Texas A&M University-  
Corpus Christi  
Electrical Engineering and  
Mechanical Engineering



**BRIA ROMERO**

Rice University  
Mechanical Engineering



**DANY SALAZAR**

Florida Atlantic  
University  
Mechanical Engineering



**EDGAR SÁNCHEZ**

California Polytechnic  
State University,  
San Luis Obispo  
Mechanical Engineering



**BENTON SCOTT**

Loyola University  
Chicago  
Finance



**KATHERINE SOLCHAGA**

University of  
Washington  
Applied Computational  
Mathematics